



# City of Atlanta FAIRBURN ROAD AT MAYS CROSSING: SAFETY AND MOBILITY IMPROVEMENTS



## FACT SHEET

### February 2018 Project Update

The traffic signal design for the intersection required signal pole location and material modifications to accommodate overhead and underground utility conflicts. The initial design was for a multi-concrete pole span wire configuration, which would have allowed quick fabrication and manufacturing of the concrete poles. These pole locations impacted multiple utilities which would have required relocation and could have delayed the project by more than a year.

A new design was necessary and prepared consisting of a single mast arm and pole which does not impact utilities. This new design requires that the steel mast arm and pole be manufactured which typically takes up to 12 weeks. All construction materials for the traffic signal installation have been delivered except for the steel mast arm and pole.

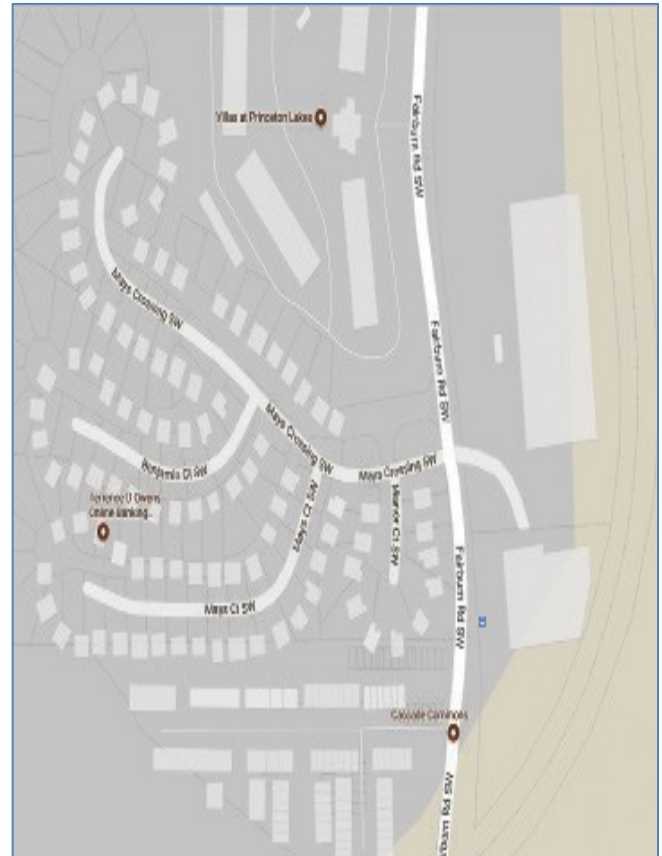
### Project Timeline

Construction activities will begin immediately once the pole and arm are delivered. The Renew Atlanta/TSPLOST Program anticipates that the traffic signal will be installed and operational in Spring 2018.



For additional information, contact Keary Lord at [renewatl-klord@atlantaga.gov](mailto:renewatl-klord@atlantaga.gov).

Renew Atlanta is an infrastructure improvement program for the City of Atlanta. The \$250 million program is the most significant investment in Atlanta's above-ground infrastructure in more than a decade and is a first step toward resolving an infrastructure repair backlog of more than \$900 million.



### Quick Project Facts

- Average Daily Traffic (ADT) of 14,650 vehicles per day, with a peak hour volume of 1,376 vehicles (2017)
- All-way to 2-way conversion will improve traffic flow and efficiency along Fairburn Road SW
- Project will improve corner sight distance at the intersection of Fairburn Road and Mays Crossing
- Changeable message boards will alert traffic to the changes
- Between 2012 and 2016 there were 17 reported accidents at or near the Fairburn Road @ Mays Crossing intersection (10 were rear-end collisions with 5 injuries)

